

964i Firmware Upgrade Instructions

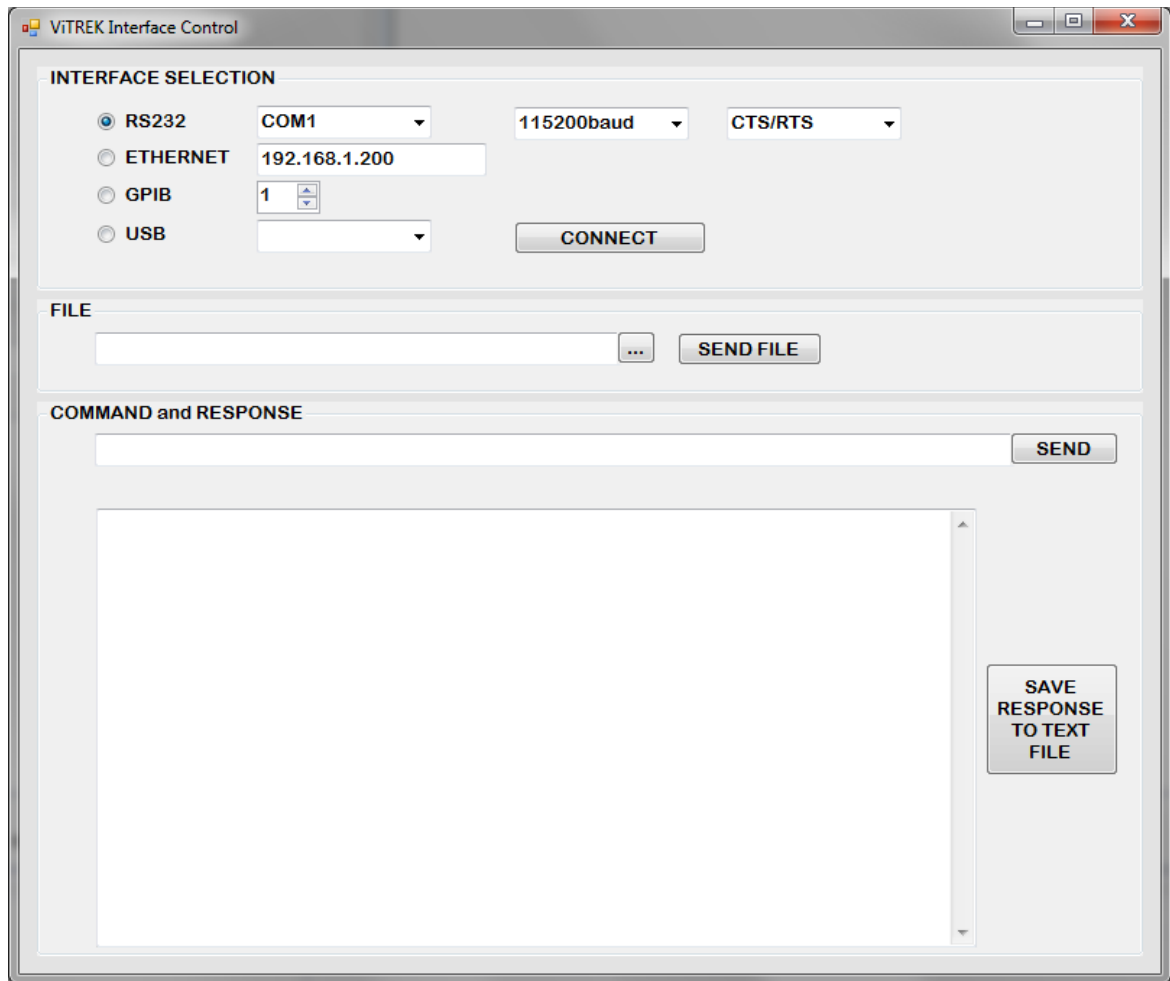
The files needed to perform a field upgrade of the 964i firmware are available as a .zip file from Vitrek.

NOTE THE FOLLOWING BEFORE STARTING THIS PROCEDURE –

- The 964i must be connected to a computer via the RS232 interface. Ensure that the computer has a compatible interface and a suitable cable is available.
- The Windows application provided by Vitrek has been tested in all versions of Windows XP, Vista, 7 and 8. The application runs under Windows 8 as a desktop application, a touch panel is not supported. Windows versions prior to XP are not supported.
- You may need to change your computer security settings to extract the files contained in the .zip file provided by Vitrek as this contains an executable file. Contact your IT department if you are unsure how to do this.
- During the actual upgrade process there is a period of a few seconds where power **MUST NOT** be removed from the 964i. If the local grid power is severely unreliable then the use of a UPS is strongly recommended during this process. If a power failure or a communications failure occurs during the code download process, but prior to the programming portion, then it may be safely restarted after toggling power to the 964i and closing and re-opening the Vitrek Interface Control application.
- The Vitrek Interface Utility is a general utility allowing communications with several Vitrek products; however, the Ethernet and the USB portions of this utility are not applicable to the 964i and should not be selected by the user.

Follow the steps below to install these files onto a computer and perform the upgrade –

1. Create a directory on the computer which will be used to hold the files from the .zip file. The name and location are not important, but make a note of it for later use.
2. Unzip the contents of the .zip file to the directory created in step #1 above.
3. If using a Windows version prior to 7 the user may need to install Microsoft .NET Framework 4 prior to using the application. If this framework is not installed then an error will be displayed when an attempt is made to run the application. See the Microsoft website for details regarding this.
4. Using Windows Explorer, locate the Vitrek Interface Control.exe file in the directory and run it.
5. The program should run and have an opening window similar to that shown below –



6. To perform the upgrade the user must connect the 964i unit to a computer, using the RS232 interface.
7. When using the RS232 interface --
 - a. The IFACE setting of the 964i must be set for RS232 at 115200baud (for best transfer rate).
 - b. Connect the computer RS232 port to the 964i RS232 port using a Null Modem cable (Available from Vitrek).
 - c. In the INTERFACE SELECTION section of the Vitrek Interface Control application, select the RS232 interface, select the corresponding COM port being used on the computer, set for a matching baud rate to that in step 7a (115200baud for best transfer rate), and CTS/RTS handshake.
8. In the INTERFACE SELECTION section of the Vitrek Interface Control application, click on the CONNECT button.
9. In the FILE section of the Vitrek Interface Control application, click on the ... button. A dialog will open allowing you to select the file containing the firmware upgrade. Select the file entitled 964_Main.abs.S19 in the directory created in step #1 and click on the OPEN button in that window.
10. In the FILE section of the Vitrek Interface Control application, click on the SEND FILE button.

The display on the 964i should show the progress of the upgrade and the progress bar in the FILE section of the Vitrek Interface Control application will also show the progress. NOTE –

- a. Depending on the baud rate being used, the file transfer may take several minutes to complete.
 - b. After the 964i has completed the upgrade, the display reverts to that previously shown. Cycle the power to the 964i (turn it off and then back on again after a second or more).
11. This completes the firmware upgrade of the 964i.
The new version of firmware installed in the 964i can be seen on the opening screen which is displayed for approximately 2 seconds after powering on the unit.